

2021-2022

ANNUAL REPORT

**Guidelines and Economists Network
International**

Our mission

To facilitate the effective integration of Clinical Practice Guidelines (CPGs), economic and clinical evidence into national decision making and clinical practice in the health sector, especially hospitals and primary care by:

1. Stimulating collaboration between economists, hospitals, and primary care world-wide in translating CPGs, economic and clinical evidence into clinical practice.
2. Achieving participation world-wide by Health Economic Associations, Governments, guideline development agencies, WHO, World Bank, United Nations, OECD, medical and surgical associations, universities, foundations, and national hospital associations.¹
3. Facilitating health economists to achieve leadership roles in health care organizations to undertake the above activities, applying appropriate technical and clinical governance approaches to localizing CPGs and the evidence into clinical protocols and pathways.
4. Facilitating efficiencies to achieve the above goals by:
 - Identifying key medical and surgical priority areas worldwide for GENI's work program and with regard to funding opportunities to support such work.
 - Encouraging collaboration world-wide in the compilation and proliferation of health economic and clinical evidence and its methodological grading²
 - Stimulating the use and development of appraisal of CPGs eg Appraisal of Guidelines for Research and Evaluation.
 - Obtaining agreement on cost effectiveness thresholds for CEA, applying the societal perspective where possible.
5. Forging linkages with bodies that set the standards for appropriate treatment under different conditions that may link to contracts or regulatory processes eg insurers or national government funding systems.
6. Determining mechanisms whereby CPGs and localized quality instruments such as protocols and pathways can be used by national insurance paying health care providers per individual product and to determine appropriate treatment scenarios related to DRGs, Diagnostic Cost Groups (DCGs) and DBCs (The Netherlands).
7. Identifying and stimulating the financing of GENI's deliberations.

¹ UK, England, Scotland, The Netherlands, Australia, New Zealand, Canada, USA, Singapore, Hungary, Poland, Japan, Hong Kong, China, France, Sweden, Switzerland, Germany, Norway, Thailand and Middle East.

² Currently mechanisms to grade clinical evidence for CPGs can vary between countries, eg NHMRC (Australia), NICE (UK), SIGN (Scotland) and The Netherlands all use different 'Levels of Evidence' and 'Grades of Recommendations'.

Our vision

Achieving participation worldwide

To work towards achieving its goals, GENI is collaborating with Health Economic Associations, Governments, Parliaments, guideline development agencies, WHO, World Bank, United Nations, OECD, medical and surgical associations, universities, foundations, national hospital associations, health service delivery organisations and other health economists and health care professionals.

GENI has established a LinkedIn® Group to facilitate collaboration and share knowledge and ideas.

We look forward to seeing the GENI network grow and sharing insights and approaches to improving evidenced-based care, along with improvements in equity in related national funding and regulation scenarios.



CONTENTS

Our mission [page 3]

Our vision [page 4]

Section 1 – An overview of GENI

About us [page 6]

Our structure and management [page 6]

Our People [page 8]

Section 2 – Governance

Chairperson’s report [page 22]

CEO’s report [page 23]

Our Objectives and Activities [page 24]

Performance Awards [page 28]

Selected publications [page 29]

Section 3 – Our Finances

Simplified operating statement [page 35]

Section 4 – Our other important information

Acknowledgements [page 37]

Contact us [page 38]

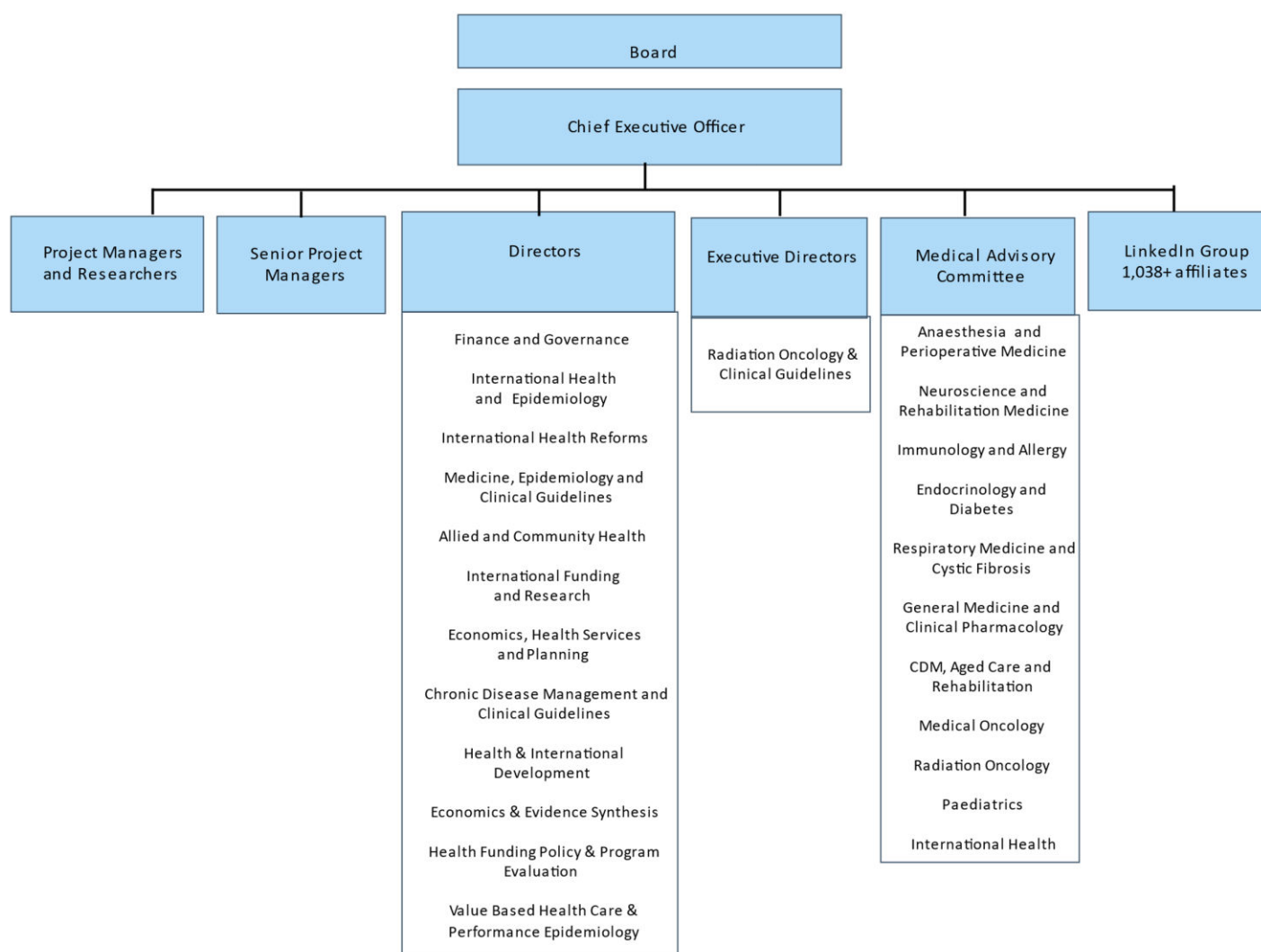
ABOUT US

Guidelines and Economists Network International (GENI) is a not-for-profit association that aims to drive international mechanisms to integrate Clinical Practice Guidelines (CPGs), clinical and cost effectiveness evidence into national decision making and clinical practice. A key imperative is to forge links with national bodies that set standards, regulation, and funding processes such as governments and insurance bodies.

GENI has a unique focus on achieving both clinical and cost effectiveness in healthcare delivery and equity in related funding worldwide. GENI's vision is being implemented by an international Board of experts from the OECD, World Bank, Australia, UK, USA, Canada, China, NZ, Sweden, and Denmark. The current reach of GENI Board members' work is extensive ranging from impacts at the point of health care delivery and extending through to national Governments and Parliaments.

To achieve GENI's key objectives, we are Identifying key medical and surgical priority areas worldwide, stimulating funding opportunities to support the work and encouraging collaboration worldwide in relevant economic and clinical methodologies.

Our Structure and Management





OUR PEOPLE

Board members

Name	GENI Position	Professional position(s)
Professor Michael Drummond (UK)	Chair	Professor, Centre for Health Economics, University of York
Dr Kathryn Antioch (Australia)	CEO	Principal Management Consultant, Health Economics and Funding Reforms, Adjunct Senior Lecturer, Department of Epidemiology and Preventive Medicine, Monash University.
Professor Carl Asche (USA)	Board member	Research Professor of Medicine and Director of the Center for Outcomes Research at the University of Illinois College of Medicine at Peoria, USA
Dr Michael Borowitz (The Global Fund, OECD)	Board member	Chief Health Economist, The Global Fund. Senior Health Economist, OECD
Professor Peter C. Coyte (Canada)	Board member	Professor, Institute of Health Policy, Management and Evaluation, School of Public Health, University of Toronto Canada
Dr Doris Kirigia (Africa)	Board member	Health Economist and Public Health Specialist, WHO
Dr Maureen Lewis (USA)	Board member	CEO, Aceso Global.
Dr Louis Niessen (USA)	Deputy Chair	Professor and Chair of Health Economics, Liverpool School of Tropical Medicine. Honorary professorships and affiliations: Universities of Warwick, Liverpool, and Bologna.
Dr Ulf Persson (Sweden)	Board member	Senior Advisor, The Swedish Institute for Health Economics, Sweden.
Dr Guy Scott (NZ)	Board member	Senior Lecturer in the School of Economics and Finance, Massey University
Dr Meng Qingyue (China)	Board member	Professor in Health Economics, Executive Director, Peking University China Center for Health Development Studies, Director, Key Lab for Health Economics and Policy Studies, China's Ministry of Health
Dr Hindrik Vondeling (Denmark)	Board member	Associate Professor in Health Technology Assessment (HTA) and Health Economics (HE) at the Centre for Applied Health Services Research and Technology Assessment (CAST) and the Department of Health Economics of the University of Southern Denmark (SDU), Odense, Denmark.

CEO and Management Team

Name / title / qualifications



Dr Kathryn Antioch
Chief Executive Officer

GAICD, PhD (Health Economics) MSc, BA (Hons), AFCHSM CHM

Biography

Kathryn is CEO, Guidelines and Economists Network International (GENI), Principal Management Consultant, Health Economics and Funding Reforms, Adjunct Senior Lecturer, Department of Epidemiology and Preventive Medicine, Monash University, Melbourne Australia.

Kathryn has over 25 years working in senior roles in Government, Private and NFP sectors including Federal and State Governments, Victorian hospitals, Canadian Royal Commission and GENI. Her leadership roles involve health policy and funding reforms, hospital and government administration and translational research in medicine and economics. She has worked on national pandemic planning. She advised the Australian Parliament through participating in 18 Senate Inquiries. During 2020 this included the COVID-19 Senate Inquiry and Senate Committee Public Hearings on the Fetal Alcohol Spectrum Disorder Inquiry.

Kathryn's work also concerned the Council of Australian Governments (COAG) 2016 Heads of Agreements on Public Hospitals and stakeholder engagement in 2016 and 2017 involving five jurisdictions, Senate Inquiries, and Independent Hospital Pricing Authority (IHPA). Her ABF risk adjustment reform work is published in three editions of the European Journal of Health Economics. She presented 'Australian COAG national health reforms 2017-2020 Implications for the private sector' as an invited speaker at the 2017 Annual Health Insurance Summit. Kathryn held Ministerial appointments to two Principal Committees of the National Health and Medical Research Council over a six-year period concerning public health and clinical practice guidelines. She was an Editorial Board member, Cost Effectiveness and Resource Allocation Journal, until 2022.

As CEO GENI, Kathryn forges links with national bodies that set standards, regulation, and funding processes. This aims to achieve cost effectiveness in healthcare delivery, equity in related funding and Value Based Health Care. She also leads translational research work in medicine and economics concerning COVID-19, vaccinations, diabetes, cancer, cystic fibrosis, orphan drugs, Non-Communicable Diseases, and clinical guidelines.

She was awarded the Australian Institute of Company Directors (AICD) Scholarship to undertake the AICD International Company Directors Program in Singapore and graduated in 2020. Monash University nominated her for the Victorian Premier's Award for Health and Medical Research. She received the Health Administrators' Association of British Columbia Award for Scholarship and Leadership, UBC, Canada. She was awarded an Australian Public Service Post Graduate Award (Overseas) to undertake the studies in Canada.



Peter Landers
Director, Finance and
Governance

B Bus (University of Southern
Queensland) MBA (RMIT
University) FCA FCPA CFP
GAICD

Peter Landers is a Financial Adviser with a wealth of experience in Chartered Accounting and Financial Advisory, along with the practical backing of experience in commerce and high-level enterprise management. His professional life, spanning 37 years, has incorporated finance and management roles within both Commerce and Chartered Accounting, including Chief Executive Officer of the Melbourne Division of an international accounting firm. As the founder of Salt Financial Group, his personal focus is as an adviser to the owners and operators of small and medium enterprises.

Peter has held various Directorships within the Private Sector and several Community Organisations, providing consultancy services for medical specialists, surgeons, and the NSW Cancer Council. He has held the role of Secretary of the Australian Society of Aesthetic Plastic Surgery. He was Director of the Umbrella Superannuation Fund, now part of the Crowe Horwath Group, administering \$100m in members' funds. This organisation is the largest provider of practical accounting, audit, tax, business and financial advice to individuals and businesses from a network of over 80 offices throughout Australia and New Zealand.



A/Prof Priscilla Robinson PhD
(Epidemiology)
Director, International Health,
and Epidemiology

PhD Epidemiology (Melbourne
University), MPH (Monash
University), MHSc (Public
Health Practice) (La Trobe
University)

A/Prof Robinson was appointed Director, International Health and Epidemiology, GENI during March 2016.

A/Prof Priscilla Robinson has 18 years' experience working across the UK in disease surveillance and epidemiology and another 7 years for the Victorian Government, Australia managing State-wide surveillance of communicable diseases. She currently works on public health in developing countries, the standardisation of international public health core competencies, and the role of the arts in public health. She has worked as a Senior Lecturer, La Trobe University since 2002 and has over 40 publications.

She is an editor for the Australian and New Zealand Journal of Public Health and also for the Australian Epidemiologist. Priscilla is on the Editorial Board of the Journal of Peace and Security. She is Board member, South Gippsland Health Service, Victoria and also CONCERN Australia, a faith-based NGO. She teaches and publishes extensively in public health, epidemiology, and health services administration. Priscilla's expertise in epidemiology and surveillance will greatly facilitate the work of GENI, providing synergy with the skill sets of other members of the GENI team.



Dr Rick Marshall

Director, Value Based Health
Care and Performance
Epidemiology

PhD, Epidemiology (ANU),
Graduate Management
Certificate (University of NSW),
Health Economics Postgrad
Certificate (University of
Sydney), Diploma Applied
Psychology, Clinical (University
of Tasmania),

Dr Rick Marshall OAM is an international consultant on healthcare Case-Based activity measurement, pricing, and performance management. He is a former clinician, healthcare service manager and system developer. He has held Professorial appointments with the Faculty of Health Sciences at the University of Sydney and the Institute of Global Health Innovation at Imperial College London. He specializes in healthcare system performance analysis, Patient Based Funding reform and Management Information Development for healthcare.

He has extensive experience in senior executive and advisory roles in the Australian Federal, Victorian, NSW and ACT governments, the Independent Hospital Pricing Authority and governments in Ireland, England, and Hong Kong.

Dr Marshall led the teams that initially established the Australian DRG system and the Activity Based Funding (ABF) mechanisms for Australia's Independent Hospital Pricing Authority. He recently established the role of Director of Pricing for the NHS in England and has held the appointment of Chief Expert on Casemix and Activity-Based Funding and Payment in China's National Health Development Research Centre.

Rick's recent activities have included providing advice on and support in value-based healthcare innovation and performance improvement programs to Governments, payer organisations and individual providers in Africa, Asia/Pacific, Europe, Middle East, and North America. These interests include various project roles with WHO, World Bank and other international development organisations.



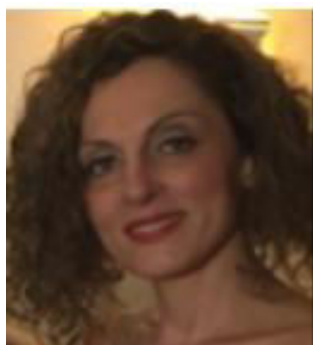
Fiona Sherwin
Director, Allied and Community Health

B Physio (Hons) (Melbourne University) G Cert Public Health (Flinders University) MHA (La Trobe University) EMBA Candidate (Melbourne University '22) FCHSM

Fiona was promoted to Director of Allied and Community Health at GENI in May 2017. She has been involved as a researcher for GENI since 2014. Since this time Fiona has contributed to systematic reviews on the cost effectiveness evidence related to type 2 diabetes mellitus, cystic fibrosis, prostate cancer, and maternal and child vaccinations. She is currently undertaking research exploring the potential impact of public health infrastructure on COVID-19 vaccination campaigns in different jurisdictions.

As an experienced physiotherapist and health service manager, Fiona is passionate about using graded evidence to inform decision making at all levels. She is committed to addressing social inequity and promoting health system efficiency. Fiona is the Senior Project Officer in the Office of the Chief Executive at Monash Health. In this role she has contributed to the establishment of various interventions as part of the COVID-19 response.

Previously, Fiona oversaw the Physiotherapy Department at Dandenong and Casey Hospitals, where she was responsible for leading weekend and outpatient services reviews. Fiona has held various project and leadership roles at Knox Private Hospital (Healthscope), Alfred Health and the Australasian College of Health Service Management.



Billie Atanasova
Director, International Funding and Research

BHSc (Hons) (La Trobe University), MPH (Melbourne University), AFCHSM, CHE

Billie Atanasova was appointed Director, International Funding and Research, GENI in June 2016. She is the National Sales Manager, Corporate Super at Prime Super. Prior to that she was Relationship Manager – Health and RCSA Portfolios, Prime Super. She previously was the Executive Director, Membership, Sponsorship and Marketing at Leading Age Service Australia (LASA). With over 22 years' experience in the health sector, Billie is an experienced health executive, project manager, researcher, evaluator, and mentor who has worked across various public, private, and corporate settings.

Billie has held senior roles at the Australasian College of Health Service Management (ACHSM), including Executive Officer (Victoria) and Manager, Policy, Advocacy and Management Residency Program. During her tenure at the ACHSM Billie fostered productive collaboration with GENI through the ACHSM's residency program and her effective stakeholder engagement via facilitating a televised policy debate on key 2014-15 Victorian Health Budget policy initiatives, involving the Victorian Government, CEO, GENI and several hospital CEOs. Billie has contributed to large-scale public health projects aimed at investigating environmental, genetic, and behavioural contributing factors of disease prevalence, and researching alternative treatments to various cancers.

She has extensive experience in identifying opportunities and preparing health services research grant funding applications. She increased the number of grant submissions by the ACHSM by 3 fold in a 12 month period and has spent much of her career preparing National Health and Medical Research Council (NHMRC) grants. Billie's experience in evidence-based research, evaluation and funding is a great value add to the work of GENI.



Angeline Kuek
Director, International Health Reforms

BBiomedSc (University of Melbourne), BSc (Hons) (University of Melbourne), Master of Public Health (University of Adelaide), Master of Health Administration (Latrobe University).

Angeline was promoted to Director, International Health Reforms in 2019 following her work as Senior Project Manager, GENI during 2018 on studies pertaining to 'Cost Effectiveness Analysis of Child Vaccinations in Africa: International Lessons for Clinical Practice Guidelines in Developing Countries' and 'Cost Effectiveness of Prostate Cancer screening and diagnostic strategies: International Lessons for Clinical Practice Guidelines.'

Since 2017 she has worked on the project concerning 'Non-Communicable Disease (NCD) Crisis in the Pacific Multi-sector Collaboration, Regulation and Cost-Effective Innovation'. Angeline is currently Senior Consultant at KPMG's Health, Ageing and Human Services team with extensive experience in project management and has worked across a variety of projects concerning digital health, mental health, safety and quality, service re-design and service and program evaluation. She has research experience concerning eating disorders and mental health at the Singapore General Hospital and the Statewide Eating Disorder Service in South Australia.

Angeline is passionate about ensuring that people get access to the right care at the right time and has a strong interest in mental health, public health, healthcare delivery, health equity, health economics, population health and chronic disease.



Rhonda Kerr
Director, Economics, Health Services and Planning

B.A (Economics) ANU; GAICD 2009; Doctor of Philosophy (Ph.D.) Curtin University.

Professionally, Rhonda Kerr is Senior Clinical Services Planner, Hames Sharley; Director, Rhonda Kerr and Associates Health Planning and Director, Recovery Inn Pty Ltd developing medihotels in Western Australia. Rhonda is closely involved in corporate governance chairing a charitable foundation for children and youth in Western Australia, and a member of a number of Boards and committees.

She has extensive experience in the use of clinical guidelines in a wide variety of health settings for hospital and health service planning throughout Australia, New Zealand, Malaysia, Fiji, and India. As a contributor to the UIA-Public Health Group she contributed to international collaborations on evidence-based change for health service delivery. She has participated in Federal Parliament Senate Inquires on health reforms in Australia and was referenced in the interim reports of both the Productivity Commission Review of private and public hospitals and the National Health and Hospitals Reform Commission.



John Pilla

Director, Health Funding Policy,
and Program Evaluation

Bachelor of Science (Hons),
(University of Adelaide),
Graduate Diploma in Business
Administration, (University of
South Australia) Member and
Committee Chair, Australasian
Evaluation Society.

John has worked in the private and public health care sectors for over 30 years in a range of roles including Director, KPMG's national healthcare practice and prior to this, he had executive roles in federal and state governments. John has been involved for several years in national hospital funding policy development and has extensive health program evaluation experience. John operates his own consultancy practice and is an evaluation advisor for a range of organisations including an Indigenous owned organisation. He is a recipient of a national award for best practice in evaluation and is the Chair of the South Australian Australasian Evaluation Society Coordinating Committee.

John's evaluation experience covers a wide range of policies, methodologies, and functions. John has evaluated national reforms in aged care, primary health care and Aboriginal and Torres Strait Islander health care that led to fundamental reform. His involvement in the evaluation of the coordinated care trials led to reforms of general practice. John has been at the forefront of hospital funding policy development for several years. More recently, he worked with the Department and Prime Minister and Cabinet on the development of a national hospital funding system and with the Independent Hospitals Pricing Authority on various improvements to the national funding system.



Helen Sinnot

Director, Chronic Disease
Management and Clinical
Guidelines

Helen was promoted to Director, Nursing and Midwifery at Western Health in August 2021. Prior to that she held the roles of Director of Nursing and Midwifery Informatics and Chief Nursing and Midwifery Informatics Officer at Western Health. She is the former Executive Officer of the Australian Disease Management Association (ADMA), a clearing house of expertise in disease management. It provides a forum and advocacy for disease management services to promote programs, which improve outcomes and quality of life and reduce acute health care utilisation and costs in patients with chronic conditions.

Helen has been employed in health care in the UK, USA, and Australia for over 20 years and brings a wealth of experience in healthcare and project management having been instrumental in the development of the chronic disease management services at Western Health including model development and evaluation. She also has experience with health reform while Change Manager with the National Health Workforce Taskforce. In this role she was involved in the development of a national program to test and demonstrate major shifts in workforce utilisation and deployment across all sectors of aged care. Helen has also been actively involved in the development of the Integrated Chronic Disease Management Online Clearinghouse. At Western Health in Melbourne, Helen was involved in the process of integrating clinical practice guidelines and clinical and economic evidence into practice, including researching and grading evidence, through participation in the Clinical Pathways Working Group.

Helen was promoted to Director, Chronic Disease Management and Clinical Guidelines, GENI following her work as Senior Project Manager, GENI.



Binaya Chalise
Director, Health and
International Development

MPH, (La Trobe University, Australia), BPH (Nepal Institute of Health Sciences) Proficiency Certificate in General Medicine (Nepal Institute of Health Sciences) PhD (Hiroshima University Japan (expected 2023))

Binaya Chalise works as a Research Associate at the Nepal Health Research Council and is a Scientific Committee member of the National Summit of Health and Population Scientists in Nepal. At the Nepal Health Research Council, he undertakes extensive collaboration with researchers on conducting systematic reviews in the Council's priority areas to facilitate the translation of clinical evidence into policy and clinical practice in Nepal. He is working with the Ministry of Health to develop National Health Account of Nepal.

With broad experience, leading the development and implementation of public health programs, Binaya Chalise has a decade-long career in public health research and clinical practise. His experience in clinical medicine and public health has involved extensive travel across Nepal and to Australia, involving experience of coordinating public health research and international operations across varied and multi-cultures in both developed and developing nations. He has undertaken extensive research on health care policies and procedures to analyse clinical and cost effectiveness evidence and to recommend appropriate remedial action. Whilst working at the Nepal Health Sector Support Program, he travelled throughout Nepal to locations severely impacted by the 2015 earthquake, to analyse health delivery practices and to implement recovery strategies based on the disaster management, economic and clinical evidence assessed from a stock take assessment.



Dr. Yen Cheng Henry Pan
Director, Medicine,
Epidemiology and Clinical
Guidelines

M.B.B.S (Hons), Bachelor of
Medicine/Bachelor of Surgery
(Honours), Faculty of Medicine,
Nursing and Health Sciences,
Monash University, Victoria,
Australia BMedSc (Hons),
Bachelor of Medical Science
(Honours), Central Clinical
School, Alfred Health, Faculty
of Medicine, Nursing and
Health Sciences, Monash
University, Victoria, Australia

Henry is a Junior Medical Officer at Melbourne Health at the Royal Melbourne Hospital, having completed his MBBS (Hons) in 2019 at Monash Medical School. He has undertaken clinical placements in all areas of medicine and surgery throughout his medical degree at hospital networks around Victoria including Monash Health, Alfred Health, Peninsula Health and Bendigo Health.

Henry was promoted to Director, Medicine, Epidemiology and Clinical Guidelines in December of 2019, following his involvement in the projects 'Cost Effectiveness of Prostate Cancer Screening and Diagnostic Strategies: International Lessons for Clinical Practice Guidelines' and 'Cost Effectiveness Analysis of Child Vaccinations in Africa: International Lessons for Clinical Practice Guidelines in Developing Countries' in his previous role as Senior Project Manager. This follows his contributions as a Researcher and Project Manager for GENI since 2015, contributing to two systematic review studies concerning 'Personalised Medicine, Genetics and Economics: Cystic Fibrosis Lessons for Quality, Guidelines and Policy Reforms' and 'Cost Effectiveness Evidence for interventions for Type 2 Diabetes: International Lessons for Clinical Guidelines'.

Henry intermitted his medical degree in 2018 to undertake a Bachelor of Medical Science (Honours) in Urology at Alfred Health, supervised by Professor Grummet, focussing on prostate cancer diagnostics with the latest in radioactive Gallium-68 tracers and cutting-edge PET/CT and PET/MRI diagnostic imaging. He has completed a research project in Urology at Monash Health, entitled "Can We Trust Sonographic Urinary Tract Stone Size?", and has a keen interest in pursuing urology as his chosen specialty following graduation.

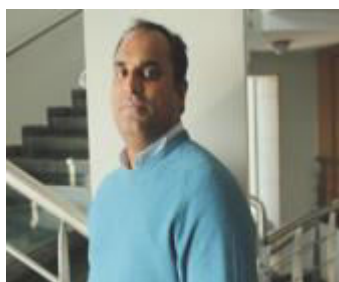


Dr Nigel Anderson
Executive Director Oncology
and Clinical Guidelines

Doctor of Philosophy (PhD)
Monash University; Ba App. Sci
(Medical Radiations) RMIT; Ba
App Sci (Human Biology) RMIT

Nigel was appointed Director, Radiation Oncology and Clinical Guidelines, GENI during January 2017 and was subsequently promoted to an Executive Director role. During December 2021, he was promoted to Radiation Therapy Manager at Austin Health. He previously held the role of Principal Research Radiation Therapist, Peter MacCallum Cancer Centre since November 2015. This work required extensive multidisciplinary collaboration within the Peter MacCallum Cancer Centre and with several external partners, to enable innovative radiation oncology practice in a highly technical and collaborative profession.

Nigel has ten years prior experience working as a clinical radiation therapist at the Olivia Newton John Cancer Wellness and Research Centre in Melbourne where he facilitated the clinical implementation of a new radiotherapy treatment planning system and a stereotactic radiotherapy program, in accordance with Clinical Practice Guidelines.



Denny John
Director, Health Economics and
Evidence Synthesis

Bachelor of Physiotherapy
(Mangalore University, India),
MBA-Hospital Management
(IHMR, Jaipur), Master of Public
Health (University of
Auckland).

Denny John is Evidence Synthesis Specialist, Campbell Collaboration, and based in New Delhi since December 2016. He has over 13 years' experience across health services management, project manager, researcher, evaluator, and academic across public, private, and corporate settings.





He has experience working with development organisations, insurance companies, and healthcare consulting, conducting economic evaluation, systematic reviews, and disease forecasting studies. His experience spans of working in India and Nepal, and supporting community health financing projects in Bangladesh, Tanzania, Nigeria, and Ghana.

He has been the Principal Investigator/Co-Investigator for over 15 research studies conducted across various states in India and has been awarded several research and project grants from national and international bodies.

Project Managers and Researchers

Name	GENI / professional position	Qualifications
Dr David Warncken	Senior Project Manager, GENI Resident Medical Officer, Royal Melbourne Hospital	MD (Flinders University), Bachelor of Medical Science (Flinders University), Graduate Diploma Addiction and Mental Health (Adelaide University).
Lauren Richardson	Senior Project Manager, GENI Senior Policy Officer, Screening and Cancer Prevention, Department of Health and Human Services	Bachelor of Health Science (BHSc) (Victoria University), Bachelor of Medical Science (BMedSc) (Hons) (University of New South Wales), Master of Public Health (MPH)/ Global Health candidate (University of New South Wales, expected completion date 2023).
Denise Seidel	Senior Project Manager, GENI Research and Consulting Manager, Transdisciplinary (TD) School, University of Technology Sydney, NSW	Master of Business Law (MBL) (Southern Cross University), Bachelor of Accounting (BAcc) (University of South Australia), Diploma of Commerce (SIBT/Macquarie University, Diploma of Business Administration (Williams Business College)
Nigel Pratt	Senior Project Manager, GENI Clinical Research Coordinator, Infectious Diseases Unit, Burnet Institute, Alfred Hospital	Degrees in nursing (LaTrobe University) Masters in public health (LaTrobe University) International Health Economics Course (LaTrobe University)
Meg Bumpstead	Senior Project Manager, GENI Anaesthesia & PACU Clinical Nurse Specialist, Cabrini Health Director Clear Ears Pty Ltd	Master of Business Administration (MBA), Post Graduate Diploma in Advanced Clinical Nursing – Intensive Care Bachelor of Applied Science – Nursing
Kaylene Fiddes Ryan	Senior Project Manager, GENI Health Services Management Consultant, Beness	Advisory Committee, Australian Disease Management Association (ADMA)
Dr Sahar Daghigh Yazd	Senior Project Manager, GENI	PhD, Applied Health Economics (University of Adelaide, Australia); Master's degree, Applied Economics; Bachelor's degree, Statistics
Gideon Meyerowitz-Katz	Project Manager, GENI	BSc (University of Sydney), Master of Public Health (University of Sydney)
Jhai Madden	Project Manager, GENI	Bachelor of Science (Melbourne University), Master of Public Health (MPH) (Melbourne University), Master of Health Administration (MHA) (La Trobe University)

Medical Advisory Committee

Name	Professional position	Qualifications
 <p>Professor Jo Douglass</p>	<p>Professor of Medicine and Head of the Department of Medicine, Melbourne Medical School, The University of Melbourne</p> <p>Director of Research and James Stewart Professor of Medicine, Royal Melbourne Hospital (RMH) and University of Melbourne</p>	<p>BMedSc (Hons), MBBS Monash, MD Monash, FRACP</p>
 <p>Associate Professor Paul Dugdale</p>	<p>Director, Centre for Health Stewardship, Australian National University (ANU)</p> <p>Senior Specialist Chronic Disease Canberra Health Services.</p>	<p>BMBS, MA, MPH, PhD, FAFPHM</p>
 <p>Professor Fary Khan AM</p>	<p>Director of Rehabilitation Services, RMH, Director Australian Rehab. Research Centre,</p> <p>Clinical Professor Dept. of Medicine, University of Melbourne, and Nossal Institute of Global Health, and Monash University</p> <p>Vice Chair, ISPRM</p> <p>Board member, RMSANZ</p> <p>Inaugural Academic Fellow to board of AFRM, RACP</p>	<p>MBBS FAFRM MD AMC</p>
 <p>Professor Danny Liew</p>	<p>Dean and Head of Adelaide Medical School. University of Adelaide.</p> <p>Consultant Physician Royal Adelaide Hospital.</p>	<p>MBBS (Hons), BMedSc(Hons), FRACP, PhD, Cert Health Econ</p>



Professor Jeremy Millar

Director of Research,
Alfred Health Radiation
Oncology
Head of Brachytherapy,
Alfred Health
Deputy Chairman, Cancer
Council Australia
Chair, Cancer Council of
Victoria

BMedSc, MBChB, FRANZCR, FChPM



Professor Paul Myles

Professor and Director,
Department of Anaesthesia and
Perioperative Medicine, Alfred
Hospital
Chair of the Monash University
Department of Anaesthesia and
Perioperative Medicine,
Melbourne, Australia

MBBS, MPH, MD, DSc, FCAI, FANZCA, FRCA, FAHMS



Dr Ifelayo Ojo

Pediatric resident,
University of Minnesota,
USA

Bachelor of Medicine, Bachelor of Surgery (MBBS),
Master of Public Health (MPH)

Professor Max A.
Schwarz, AM

Former Head of the
Medical Oncology Unit,
Alfred Hospital,
Melbourne Australia

MBBS (Hons) FRACP FACP FChPM



Professor Duncan Topliss

Director of the
Department of
Endocrinology and
Diabetes, Alfred Hospital,
Melbourne Australia

MB BS Hons, MD, FRACP, FACE

Professor John Wilson
AM

Head, Cystic Fibrosis
Service, Alfred Hospital,
Melbourne
Allergy, Immunology and
Respiratory Medicine
(AIRMed) Department,
Monash University.
Melbourne Australia
President Royal
Australasian College of
Physicians.

B.Sc (Hons), MBBS Melbourne, PhD Melbourne,
FRACP

CHAIRPERSON'S REPORT

Professor Michal Drummond, Chair, Professor, Centre for Health Economics, University of York

The Guidelines and Economists Network International (GENI) was established at the 2006 European Health Economists Conference, Hungary to enable health economists world-wide to work with peak international bodies, health services and governments in this area. Linkages to both evidence-based medicine, service delivery and related government regulatory and funding systems are central. GENI has 12 Board members, and has included members from the UK, New Zealand, Australia, USA, World Bank, OECD, Canada, China, Denmark, The Netherlands, Africa, and Sweden.

GENI Conference Satellite Sessions and/or Board meetings have been held in Hungary (Budapest), Denmark, Italy (Milan), China (Beijing), Canada (Toronto), USA (Boston) and Australia (Sydney) since 2006. Earlier Organised sessions on guideline and economic issues were also conducted by key participants in the United Kingdom (York and London) and Spain (Barcelona) prior to GENI's formation. GENI involves over 1,038 affiliate members, along with a management team including a CEO, Medical Advisory Committee, Executive Directors, Directors, senior managers, and researchers.

Importantly, issues concerning the vision for GENI was published in the 'Cost Effectiveness and Resource Allocation' journal (1) in 2017 by four GENI board members including the CEO. There we mentioned that the use of the Consolidated Health Economics Evaluation Reporting Standards (CHEERS) statements are key elements of the work of the GENI on assessing the economic literature. Important updates to CHEERS have recently been developed, which can further guide GENI's work in health economics. That work has been published in 'Value Health' and is a Report of the ISPOR CHEERS Good Practices Task Force (2).

Through our CEO, Management Team and international affiliates, we facilitate communication and collaboration with the National Health and Medical Research Council (NHMRC), Australian Parliament, Cochrane Collaboration, Guidelines International Network, International Health Economics Association, National Guidelines Clearing House AHRQ, National Institute for Clinical Excellence, WHO, Centre for Disease Control, Australian and international governments, medical and surgical associations.

This report demonstrates that GENI has provided an effective umbrella for like-minded researchers in achieving the aims implied by GENI's mission. We believe that GENI has the capability to achieve even more as appropriate funding becomes available.

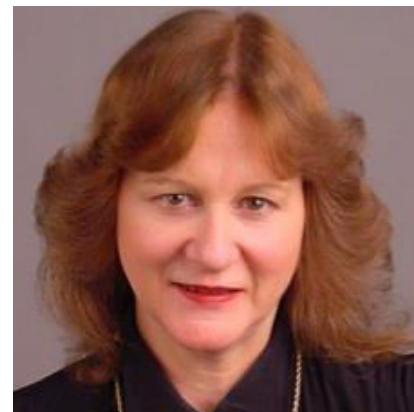
(1) Antioch KM Drummond M and Niessen L, Vondeling, H (2017) 'International Lessons in New Methods for Grading and Integrating Cost Effectiveness Evidence into Clinical Practice Guidelines' Cost Effectiveness and Resource Allocation Journal. 15:1 pages 1-15 <https://resource-allocation.biomedcentral.com/articles/10.1186/s12962-017-0063-x>

(2) Husereau D, Drummond M, Augustovski F, de Bekker-Grob E, Briggs AH, Carswell C, Caulley L, Chaiyakunapruk N, Greenberg D, Loder E, Mauskopf J, Mullins CD, Petrou S, Pwu RF, Staniszewska S. Consolidated Health Economic Evaluation Reporting Standards (CHEERS) 2022 Explanation and Elaboration: A Report of the ISPOR CHEERS II Good Practices Task Force. Value Health. 2022 Jan;25(1):10-31. doi: 10.1016/j.jval.2021.10.008. <https://www.sciencedirect.com/science/article/pii/S1098301521017952>



CEO'S REPORT

Dr Kathryn Antioch, GAICD, PhD (Health Economics) MSc, BA (Hons), AFCHSM, CHM



During the COVID-19 Pandemic, the GENI management team, researchers, Medical Advisory Committee, Board members and the GENI LinkedIn Group have continued to work virtually/remotely. This is in accordance with our usual business practices given GENI is an international virtual organisation.

Further, we are using telephone or video calls in preference to face to face meetings, to remain available for any work we are progressing and to protect our staff and community as we all work to contain the spread of the virus. GENI's operations in Australia will continue to align its work practices in accordance with the restrictions imposed by State and Australian governments. International staff should continue to abide by the pandemic laws and restrictions applicable to their country.

I want to thank you for your personal resilience and commitment to our core culture and values. GENI's vision has never been more important. GENI has over 1,038 affiliate members world-wide. GENI enables health economists, epidemiologists, clinicians, and medical experts world-wide to work with prominent international bodies, health services and governments. You assist to bring this vision to life in the work you do.

Australia is in a sound position geographically, socially, and economically to weather the pandemic storm, but we must all work together to carve our own curve. Many of you are working on very important COVID-19 and other health priorities through your daily work in your other roles in leadership, direct patient care in hospitals, planning and monitoring in government departments, consulting firms, national medical associations and in research institutions. Thank you for the work you do!

The work of GENI will continue to assist in the pandemic through stakeholder engagement and the dissemination of published breaking news and systematic reviews on new COVID-19 treatments and vaccinations thereby contributing to the tapestry of emerging evidence. New clinical guidelines are also being disseminated. I am working on the economics of the COVID-19 Pandemic: economic evaluation of government mitigation and suppression policies, health system innovations and models of care. I also participated in Australian Senate Inquires on COVID-19 and Fetal Alcohol Spectrum Disorder (FASD). I participated in senate inquiry hearings conducted at Parliament House by invitation of the Senate Committee on the FASD work. My work on economic evaluation models to address COVID was presented at the International Health Economists Association (IHEA) during 2021. Further, the far-reaching impact of COVID is being considered within GENI's agenda across several areas including those outlined below.

GENI is also simultaneously advancing our agenda in other global priorities such as Non communicable diseases in Asia Pacific, vaccinations in Africa, nutrigenomics for mitigating hunger in Africa, prostate cancer, cystic fibrosis, diabetes, Value Based Health Care, Activity Based Funding, exploring funding opportunities, perioperative health economics issues, horizon scanning for new drugs, facilitating inter-disciplinary approaches to research, new clinical guidelines and associated methodologies to develop them.

Importantly, we continue to provide opportunities for early career members to gain experience in applied health economics in health services research commencing as Researchers for GENI. To date we have had excellent participation by recent graduates in medicine, economics, health administration and others working in health-related roles. Many have since been promoted to senior management roles on GENI and in their other work roles over the years.

Dr Kathryn Antioch GAICD, PhD, MSc, BA (Hons) AFCHSM, CHM,
Chief Executive Officer,
Guidelines and Economists Network International (GENI)

OUR OBJECTIVES AND ACTIVITIES

GENI's aim is to drive international mechanisms to integrate guidelines, clinical and cost effectiveness evidence into national decision making and clinical practice. A key imperative is to forge links with national bodies that set standards, regulation, and funding processes such as governments and insurance bodies.

GENI has a unique focus on achieving both clinical and cost effectiveness in healthcare delivery and equity in related funding world-wide. The current reach of GENI Board member's work is extensive ranging from impacts at the point of health care delivery and extending through to national Governments and Parliaments.

Key conference presentations, other projects, GENI performance awards and selected publications by GENI staff are outlined below:

Conference presentations by GENI staff

1. May 2022 'The Impact of COVID-19 on Value Based Health Care (VBHC)' *Activity Based Funding (ABF) Conference 5-6 May 2022*. Independent Hospital Pricing Authority (Antioch KM, Kuek, A, Pilla J, Marshall R) Presented by Antioch KM
2. May 2022 'Value Based Health Care Australian developments and opportunities for public hospitals', *Activity Based Funding (ABF) Conference 5-6 May 2022*. Independent Hospital Pricing Authority (Pilla, J, Antioch K, Marshall R, Kuek A) Presented by Pilla J.
3. October 2021 'The COVID-19 Pandemic Challenge for Leaders – Global Lessons on How to Thrive'. Oral presentation at the *Australasian College of Health Service Management (ACHSM) Asia Pacific Health Leadership Congress 13-14 October 2021* (Antioch, KM)
4. July 2021 'The Economics of Pandemics: New Methodologies and Governance to Mitigate Pandemics Globally'. Oral presentation at the *International Health Economics Association (IHEA) 2021 World Congress 12-15 July 2021 Health Economics in Time of Global Change* (Antioch, KM)
5. October 2019 'Practical explorations of how to thrive challenges for health leaders in the public and private sector: Value Based Health Care'. (Oral presentation) *Australasian College of Health Services Management (ACHSM) Asia Pacific Health Leadership Congress 2019*. Gold Coast Australia (Antioch KM)
6. November 2018 'Cost Effectiveness of prostate cancer screening and diagnostic strategies: International Lessons for Clinical Practice Guidelines' Presented at the *National Health and Medical Research Council (NHMRC) Research Translation Symposium 2018* (Poster) (Antioch KM, Asche C, Dugdale P, Schwarz M, Bristow Z, Pan Y, Sherwin F, Kuek, A, Dally M, Anderson N, Wancken D, Richardson L)
7. September 2017 'Effectively leading waves of change in America, Europe, Asia Pacific and Africa: Using health economics, epidemiology, planning and regulation reform' *Workshop for ACHSM/ACHS 2017 Asia-Pacific Congress workshop* (Antioch KM Kerr R, Robinson P and Kerr W)
8. July 2017 'Australian COAG national health reforms 2017-2020 Implications for the private sector. *Annual Health Insurance Summit 2017, Sydney Australia* (Antioch KM Invited presentation)
9. July 2017 'Global Priorities for Clinical Practice Guidelines and Health Policy: Implications of Economic Evidence, Big Data and Personalised Medicine' *IHEA World Congress 2017 Boston USA* Organised Session: (Session participants Antioch KM, Niessen L, Asche C and Lewis M)
10. November and October 2016, '*Activity Based Funding Reform Toolkit 2016: A Practical Approach to Improving Health Service and Hospital Performance in an Environment of Fiscal Constraint (Addressing 2016 COAG Health Reforms)*' Two day workshop: Participants from NSW, Victoria, WA, ACT, NT. Workshops conducted in WA and NSW (Antioch, KM – Invited speaker following involvement in two 2016 Senate Inquires on 2016 COAG Health Reforms and Public Hospital Funding).
11. October 2016 'Workshop: Balancing Innovation and Risk: Using Economics, Evidence Based Planning, Communication and Advocacy in Health Policy and Health Services Delivery'. *Joint ACHSM/ACHS Asia-Pacific Congress, 26-28 October, 2016, Brisbane, Australia* (Antioch KM, Kerr R, Atanasova B)

12. November 2016 'Personalised Medicine, Genetics, Economics: Cystic Fibrosis Lessons for Quality, Guidelines and Policy Reforms' *NHMRC Symposium on Research Translation 2016 Melbourne* (Oral presentation by Antioch KM). Poster at *October 2016 Joint ACHSM/ACHS Asia-Pacific Congress, October, 2016, Brisbane* (paper by Antioch KM, Wilson J, Bristow Z, Sherwin F, Pan Y, Richardson L)
13. October 2015 'Effective Stakeholder Engagement on Health Issues: Powerful Impacts Q & A' *ACHSM/ACHS Asia Pacific Congress 28-30 October 2015* (Panel participants Antioch KM, Rasa J, Reid M et al.)
14. July 2015 'Systematic review of the Cost Effectiveness Evidence for interventions for Type 2 Diabetes: International Lessons for Clinical Guidelines' Presentation by Antioch KM in Organised Session: *Global Priorities for Economic Evidence in Clinical Practice Guidelines. International Health Economists Association (IHEA) World Congress Italy 2015* (Session Participants: Antioch KM, Drummond, M Niessen, L, Coyte P and Asche C). Also presented by Antioch KM at *Annual Symposium, NHMRC and ACHSM/ACHS Asia Pacific Congress, 2015* (Paper by Antioch, K Dugdale, P Topliss, D, Sinnott H, Bristow, Z, Dally M, Sherwin F, Robson H, Pan Y, Pratt N, Xu N , Wong, K)
15. November 2014 Panel 'Promoting effective clinician and stakeholder engagement' Sydney (Antioch KM) Invited Speaker, Panelist for *3rd Annual Health Technology Assessment Conference, 2014* .
16. May 2014 Invited participation and presentation – *Panelist for Australasian College of Health Service Management (ACHSM) Breakfast Forum 2014 – Live Televised Debate on the Victorian Health Budget 2014-15* (Panelists: Antioch KM, Wallace L et al)
17. July 2013 'Economic Guidelines for Clinical Guidelines: Lessons for Australian Parliament, Governments and Health Services' presentation by Antioch KM, Sydney Australia. *International Health Economists Association (IHEA) World Congress 2013* In Organized session on "Economic Guidelines for Clinical Guidelines" (Session Participants Antioch KM, Drummond M, Niessen L, Peacock S and Vonderling H)
18. October 2011 Panel member on 'Council of Australian Government (COAG), national health reforms through new Health Reform Agreement's and international reforms'. *Australian Financial Review Annual Health Congress, 2011 Sydney* (Antioch KM) Invited speaker.
19. July 2011 'Integrating Economic Evidence, Guidelines and Risk Adjustment into Australian National Health Agreements:2008 & 2010' (Antioch KM) Organized Session 'Implementing Economic Evidence through CPGs: International Experience'. *International Health Economists Association (IHEA) World Congress 2011 Toronto, Canada*. (Session Participants Antioch KM, Drummond M, Niessen L and Lewis M)
20. August 2010, 'Advantages of the National Health and Hospitals Network Agreements (NHHA) 2010: Building on Victoria's success' Presentation at the *National Hospital Reform Summit 16 and 17 August 2010 Melbourne, Australia* (Antioch KM) Invited speaker.
21. December 2009 'Performance and Funding Reforms using Risk Adjustment and Evidence Based Medicine for 2009 National Health Care Agreements (NHAs): Submissions to Australian governments, COAG, Productivity Commission and Reform Commission'. *Hospital Performance Measurement National Summit 10-11 December 2009 Sydney* (Antioch KM) Invited speaker.
22. July 2009 Guidelines and Economists Network International (GENI) Satellite Session and Organised Sessions. Presented papers on *Council of Australian Government (COAG) reforms; Global Financial Crisis; and GENI's Master plan* (Antioch, KM) *International Health Economists Association (IHEA) World Congress 2009 Beijing, China* (Session Participants: Antioch KM Niessen, L, Scott G, Lewis M (World Bank), Tam Torres, T (WHO), Richardson J
23. November 2007 'Bioterrorism Preparedness: Biological, Radiological and Chemical. An International Approach' *Counter-Terrorism Summit (Australia) Financial Review Conference 2007* (Antioch KM) Invited Speaker. Reported in Australian and International news media.
24. July 2007 Organised session on 'Integrating Economic Evidence into Clinical Practice Guidelines and Practice' and Satellite Session by 'Guidelines and Economists Network International (GENI)'. *International Health Economists Association (IHEA) World Congress 2007 Denmark* (Session Participants Antioch KM, Drummond M, Rutten, F Niessen L et al)
25. May 2007 'Risk Adjustment in Health Financing Internationally' *International Actuarial Association Health Section Colloquium, South Africa 2007* (Antioch KM) Invited speaker.

26. July 2006 'Lessons on Integrating Economic and Clinical Evidence into Clinical Practice'. Workshop for *European Health Economists Association Conference 2006, Budapest, Hungary* (Antioch KM) Invited speaker.
27. October 2005 'Integrating Economic Evidence into Clinical Practice Guidelines' *Cochrane International Colloquium 2005, Melbourne* (Workshop Participants: Antioch KM and Drummond M York and NICE UK) requested by NHMRC (invited speakers).
28. July 2005 Presenter in competitively selected Organised Session 'Integrating Economic Evidence into Clinical Practice Guidelines in the UK, The Netherlands, Australia and USA'. *International Health Economists Association Conference (IHEA) 5th World Congress 2005, Barcelona Spain* (Session Participants Antioch KM, Drummond M, Rutten F, Neissen, L)
29. July 2005 'International Uses of Risk Adjustment to Improve Health Care Financing Systems.' Organiser and Presenter in competitively selected Organised Session at the *International Health Economists Association Conference (IHEA) 5th World Congress 2005, Barcelona Spain* (Antioch KM, Ellis R et al)
30. June 2005 *Fourth Annual Health Insurance Summit 6-7 June 2005* (Chair 7th June) Sydney, Australia. (Antioch KM) invited speaker.
31. September 2004 'Integrating cost effectiveness evidence into CPGs in UK, Netherlands, and Australia' (pre-conference session) Chair and presenter, *European Health Economists Association Conference, 2004 London School of Economics*. (Session Participants Antioch KM, Drummond M, Rutten F)

Other projects: Dr Antioch's work on the economics of the pandemic

- Economics of COVID-19: economic evaluation of government mitigation and suppression policies, health system innovations and models of care by Antioch KM
- A Multi-Criteria Decision Analysis framework to prioritize economic policy to enhance Value Based Health Care during the COVID-19 pandemic by Antioch KM, Kuek A, Pilla J, Marshall R
- Economic Evaluation of the Australian Government's response to the COVID-19 pandemic by Antioch KM

Dr Antioch with other staff: Ongoing projects

- Evidence based clinical guidelines to manage non-communicable disease during COVID-19 in the Asia Pacific by Kuek A, Antioch K, Robinson P
- Africa COVID-19 vaccine project by Antioch K, Sherwin F, Robinson P.
- Cost Effectiveness Analysis of Child Vaccinations in Africa: International Lessons for Clinical Practice Guidelines in Developing Countries by Antioch K, Kuek, A, Sherwin F, Anderson N, Richardson L, Robinson P, Pan Y, Daghigh S, Maden J, Meyerowitz-Katz G, Warncken D, Fary K
- Non-communicable Disease crisis in the pacific: Multi section collaboration regulation and cost-effective innovation' Kuek A, Antioch K, Robinson P, Xiaoying (Sharon) Liu, Chalise B.

Briefings for the CEO

- Research into the Australian Charitable Accounting Standards relating to Annual Reports by Seidel, D.
- Funding opportunities for research concerning COVID-19 in Australia and internationally; Summary of Australian Government specifications for categories of research funding; the Export Market Development Grants scheme (EMDG); the Medical Research Future Fund (MRFF); New drug applications under the Pharmaceutical Benefits Scheme (PBS) for a drug to treat Spinal Muscular Atrophy; Developments concerning Oncotype DX breast cancer assay by Seidel, D
- Review of funding opportunities for Non-communicable Diseases (NCD) crisis in the Asia-Pacific by Antanasova B
- International health funding opportunities for GENI by Chalise, B.
- Nutrigenomics for mitigating hunger in Africa by Richardson L

Collaborations with Alfred Health and ADMA

- Clinical guidelines through a collaboration between ADMA and GENI, through the Alfred Health Volunteer Program (2012-2013) Antioch K, Sinnott H, Richardson L, Parker C

Public Relations: GENI website development and maintenance




- Facilitate international collaboration by Bristow Z (to 2019) and Anderson, N (since 2019).



GENI staff at the Australasian College of Health Services Management (ACHSM) congress in 2017. From left Fiona Sherwin, Priscilla Robinson, Kathryn Antioch and Angeline Kuek

PERFORMANCE AWARDS

Guidelines and Economists Network International (GENI) Award for Outstanding Contribution recipients

	Year awarded	GENI / professional position	Qualifications
	2022	<p>Director, Health Funding Policy, and Program Evaluation</p> <p>Director, Uneek Consulting</p>	<p>Bachelor of Science (Hons), (University of Adelaide), Graduate Diploma in Business Administration, (University of South Australia) Member and Committee Chair, Australasian Evaluation Society</p>
John Pilla			
	2021	<p>Director, International Health, and Epidemiology</p> <p>Adjunct Associate Professor, School of Public Health, La Trobe University</p>	<p>PhD Epidemiology (Melbourne University), MPH (Monash University), MHS (Public Health Practice) (La Trobe University)</p>
Dr Priscilla Robinson			
	2020	<p>Senior Project Manager, GENI</p> <p>Research and Consulting Manager, Transdisciplinary (TD) School, UTS</p>	<p>Master of Business Law (MBL) (Southern Cross University), Bachelor of Accounting (BAcc) (University of South Australia), Diploma of Commerce (SIBT/Macquarie University), Diploma of Business Administration (Williams Business College)</p>
Denise Seidel			
	2019	<p>Senior Project Manager, GENI</p> <p>Senior Policy Officer, Screening and Cancer Prevention, Department of Health and Human Services.</p>	<p>Bachelor of Health Science (BHSc) (Victoria University), Bachelor of Medical Science (BMedSc) (Hons) (University of New South Wales), Master of Public Health (MPH)/ Global Health candidate (University of New South Wales, expected completion date 2023).</p>
Lauren Richardson			

	2018	Director, Allied and Community Health Senior Project Officer, Office of the Chief Executive, Monash Health	B Physio (Hons) (Melbourne University) G Cert Public Health (Flinders University) MHA (La Trobe University) EMBA Candidate (Melbourne University '22) FCHSM
Fiona Sherwin			
	2017	Director, International Health Reforms, GENI Senior consultant, KPMG, Health, Ageing and Human Services	B BiomedSc (University of Melbourne), BSc (Hons) (University of Melbourne), Master of Public Health (University of Adelaide), Master of Health Administration (Latrobe University).
Angeline Kuek			
Zoe Bristow	2016	Director, Epidemiology and Clinical Guidelines	Masters Commerce, University of Sydney Masters Public Health, La Trobe University Masters, Epidemiology Uni of Melbourne

GENI MEMBERS' SELECTED PUBLICATIONS

The following selected publications relate to the research roles by GENI's members (bolded). These publications are not necessarily attributed with GENI. For a full list of each member's publications please refer to their GENI profiles online.

1. Agyeman AA, Chin KL, Landersdorfer CB, **Liew D**, Ofori-Asenso R (2020) Smell and Taste Dysfunction in Patients With COVID-19: A Systematic Review and Meta-analysis. *Mayo Clin Proc.* Aug;95(8):1621-1631. doi: 10.1016/j.mayocp.2020.05.030. Epub 2020 Jun 6. <https://pubmed.ncbi.nlm.nih.gov/32753137/>
2. Alston P, **Myles PS**, Ranucci M (2015) (editors). *Oxford Textbooks in Anaesthesia: Cardiothoracic Anaesthesia*. Oxford University Press.
3. Amatya B, Elmalik A, Lee SY, Song K, Galea M, **Khan F** (2022) A process evaluation of patient care needs using the Post-Stroke Checklist: A prospective study. *J Rehabil Med.* Feb 14;54:jrm00259. doi:10.2340/jrm.v53.349. <https://pubmed.ncbi.nlm.nih.gov/35001136/>
4. Amatya B, Elmalik A, Song K, Lee SY, Galea MP, **Khan F** (2022) Responsiveness of the International Classification of Functioning, Disability and Health (ICF) Clinical Functioning Information Tool (ClinFIT) in Routine Clinical Practice in an Australian Inpatient Rehabilitation Setting. *J Rehabil Med.* Apr 20;54:jrm00268. doi: 10.2340/jrm.v54.159 <https://pubmed.ncbi.nlm.nih.gov/35174870/>
5. Anderson M, Pitchforth E, Asaria, M, Brayne C, Casadei B, Charlesworth A, Coulter A, Franklin BD, Donaldson C, **Drummond M**, Dunnell K, Foster M, Hussey R, Johnson P, Johnston-Webber C, Knapp M, Lavery G, Longley M, Clark JM, Majeed A et al (2021) LSE-Lancet Commission on the future of the NHS: re-laying the foundations for an equitable and efficient health and care service after COVID-19, *The Lancet*, 397, 10288, p 1915-1978 64 p. [https://www.thelancet.com/journals/lancet/article/PIIS0140-6736\(21\)00232-4/fulltext](https://www.thelancet.com/journals/lancet/article/PIIS0140-6736(21)00232-4/fulltext)

6. **Anderson N**, Thompson, Andrews J et al, (2020) Planning for a Pandemic: Mitigating Risk to Radiation Therapy Service Delivery in the COVID-19 Era. *Journal of Medical Radiation Sciences*; 1-6 <https://pubmed.ncbi.nlm.nih.gov/32567800/>
7. **Antioch, KM** (2020) 'Submission to the Senate Select Committee on COVID-19 Inquiry into the Australian Government's Response to the COVID-19 Pandemic' Submission No 511 (Published by Parliament) https://www.aph.gov.au/Parliamentary_Business/Committees/Senate/COVID-19/COVID19/Submissions
8. **Antioch, KM** (2019) 'Submission to the Senate Community Affairs References Committee Inquiry into Effective Approaches to Prevention, Diagnosis and Support for Fetal Alcohol Spectrum Disorder' Submission No 48. (Published by Parliament). https://www.aph.gov.au/Parliamentary_Business/Committees/Senate/Community_Affairs/FetalAlcoholSpectrumDi/Submissions
9. **Antioch KM, Drummond M, Niessen L, Vondeling, H** (2017) 'International Lessons in New Methods for Grading and Integrating Cost Effectiveness Evidence into Clinical Practice Guidelines' *Cost Effectiveness and Resource Allocation Journal*. 15:1 pages 1-15 <https://resource-allocation.biomedcentral.com/articles/10.1186/s12962-017-0063-x>
10. **Antioch KM**, Ellis RP, Gillett S, Borovnicar, D, **Marshall, R** (2007) 'Risk adjustment Policy Options for Casemix Funding: International Lessons in Financing Reforms' *European Journal of Health Economics* 8(3): 195-212 <https://pubmed.ncbi.nlm.nih.gov/17273852/>
11. **Antioch KM** and Walsh MK (2004) 'Risk adjusted Vision Beyond Casemix (DRG) Funding in Australia: International Lessons in High Complexity and Capitation' *European Journal of Health Economics*.5: 95-109 <https://pubmed.ncbi.nlm.nih.gov/15452744/>
12. **Antioch KM**, Jennings G, Botti M, Chapman R, Wulfsohn V (2002) Integrating cost-effectiveness evidence into clinical practice guidelines in Australia for acute myocardial infarction. *Eur J Health Econ.*;3(1):26-39. doi: 10.1007/s10198-001-0088-z. <https://pubmed.ncbi.nlm.nih.gov/15609115/>
13. **Asche C**, Almoujahed MO, Ahmad S, Dwyer A, de Ramirez SS (2021) Development of a COVID-19 Patient Registry in Central Illinois. *Narrat Inq Bioeth.*;11(1):E7-E9. doi: 10.1353/nib.2021.0016. <https://pubmed.ncbi.nlm.nih.gov/34334447/>
14. Atlantis, E, Kormas, N, Samaras, K et al. (co-author **Dugdale, P**) (2018), 'Clinical Obesity Services in Public Hospitals in Australia: a position statement based on expert consensus', *Clinical Obesity*, vol. 8, no. 3, pp. 203-210. <https://pubmed.ncbi.nlm.nih.gov/29683555/>
15. Baltussen R, **Niessen L**. (2006) Priority setting of health interventions: the need for multi-criteria decision analysis. *Cost Eff Resour Alloc.* Aug 21;4:14. doi: 10.1186/1478-7547-4-14 <https://pubmed.ncbi.nlm.nih.gov/16923181/>
16. Barclay E, **Ojo I**, Hake A, Oyenuga A, Satrom K, Lund T, Oyenuga M, Slusher T, Gbadero D (2022) Neonatal Jaundice: Knowledge and Practices of Healthcare Providers and Trainees in Southwest Nigeria. *Am J Trop Med Hyg.* Jun 27;107(2):328–35. doi: 10.4269/ajtmh.21-0588. Epub ahead of print. <https://pubmed.ncbi.nlm.nih.gov/35895425/>
17. Bhattacharyya S, Hariprasad SM, Albin TA, Dutta SK, **John D**, Padula WV, Harrison D, Joseph G (2022) Suprachoroidal Injection of Triamcinolone Acetonide Injectable Suspension for the Treatment of Macular Edema Associated With Uveitis in the United States: A Cost-Effectiveness Analysis. *Value Health.* Oct;25(10):1705-1716. doi: 10.1016/j.jval.2022.07.008. Epub 2022 Aug 31. <https://pubmed.ncbi.nlm.nih.gov/36055922/>
18. Buhl, R Bel E, Bourdin A, Dávila I, **Douglass J** et al.(2022) Effective Management of Severe Asthma with Biologic Medications in Adult Patients: A Literature Review and International Expert Opinion. *Journal of Allergy and Clinical Immunology: In Practice*, Elsevier, 10 (2), pp.422-432. 10.1016/j.jaip.2021.10.059 . hal-03425748v2 <https://pubmed.ncbi.nlm.nih.gov/34763123/>

19. Burrell A, Zrubka Z, Champion A, Zah V, Vinuesa L, Holtorf AP, Di Bidino R, Earla JR, Entwistle J, Boltynkov AT, Braileanu G, Kolasa K, Roydhouse J, **Asche C** (2022) ISPOR Digital Health Special Interest Group Key Project. How Useful Are Digital Health Terms for Outcomes Research? An ISPOR Special Interest Group Report. *Value Health*. ;25(9):1469-1479. doi: 10.1016/j.jval.2022.04.1730. <https://pubmed.ncbi.nlm.nih.gov/36049797/>
20. Christiani, Y, **Dugdale, P**, Tavener, M et al. (2017), 'The dynamic of non-communicable disease control policy in Indonesia', *Australian Health Review*, vol. 41, no. 2, pp. 207-213. <https://pubmed.ncbi.nlm.nih.gov/27209156/>
21. Couch DL, **Robinson P**, Komesaroff PA. (2020) COVID-19-Extending Surveillance and the Panopticon. *J Bioeth Inq*. Dec;17(4):809-814. doi: 10.1007/s11673-020-10036-5. Epub 2020 Aug 25. <https://www.ncbi.nlm.nih.gov/pmc/articles/PMC7445799/>
22. **Daghagh Yazd S**, Wheeler, SA , Zuo, A. (2020). Understanding the impacts of water scarcity and socio-economic farm demographics on farmer mental health in the Murray-Darling Basin, published in *Ecological Economics*, doi.org/10.1016/j.ecolecon.2019.106564 <https://ideas.repec.org/a/eee/ecolec/v169y2020ics0921800919302368.html>
23. Kohli MA, Maschio M, Mould-Quevedo JF, Ashraf M, **Drummond MF**, Weinstein MC (2021) The Cost-Effectiveness of Expanding Vaccination with a Cell-Based Influenza Vaccine to Low Risk Adults Aged 50 to 64 Years in the United Kingdom. *Vaccines (Basel)* Jun 4;9(6):598. doi: 10.3390/vaccines9060598. <https://pubmed.ncbi.nlm.nih.gov/34199912/>
24. Whittall A, Nicod E, **Drummond M**, Facey K (2021) Examining the impact of different country processes for appraising rare disease treatments: a case study analysis. *Int J Technol Assess Health Care*. May 28;37(1):e65. doi: 10.1017/S0266462321000337. <https://pubmed.ncbi.nlm.nih.gov/34044899/>
25. Hamblin PS, Sheehan PM, Allan C, Houlihan CA, Lu ZX, Forehan SP, **Topliss DJ**, Gilfillan C, Krishnamurthy B, Renouf D, Sztal-Mazer S, Varadarajan S (2019) Subclinical hypothyroidism during pregnancy: the Melbourne public hospitals consensus. *Intern Med J*. Aug;49(8):994-1000. doi: 10.1111/imj.14210. <https://pubmed.ncbi.nlm.nih.gov/30561039/>
26. Hanafin PO, Sermet-Gaudelus I, Griese M, Kappler M, Ellemunter H, Schwarz C, **Wilson J**, Tan M, Velkov T, Rao GG, Schneider-Futschik EK (2021) Insights Into Patient Variability During Ivacaftor-Lumacaftor Therapy in Cystic Fibrosis. *Front. Pharmacol*. 12:577263. doi: 10.3389/fphar.2021.577263 <https://pubmed.ncbi.nlm.nih.gov/34408649/>
27. Idrose NS, Lodge CJ, Erbas B, **Douglass J A**, Bui DS, Dharmage SC (2022) A Review of the Respiratory Health Burden Attributable to Short-Term Exposure to Pollen. *Int. J. Environ. Res. Public Health* 19,7541. <https://pubmed.ncbi.nlm.nih.gov/35742795/>
28. Jackson J, **Anderson N**, Wada M et al (2020) Clinical and dosimetric risk stratification for patients at high-risk of feeding tube use during definitive IMRT for head and neck cancer. *Technical Innovations & Patient Support in Radiation Oncology*; 14: 1-10 <https://pubmed.ncbi.nlm.nih.gov/32154393/>
29. **Kerr R** and Hendrie DV (2018) Is Capital Investment in Australian Hospitals Effectively Funding Patient Access to Efficient Public Hospital Care? *Australian Health Review* 42 (5): 501-513. <https://pubmed.ncbi.nlm.nih.gov/30135003/>
30. **Kerr R**, Hendrie DV, Moorin RE (2014) Investing in Acute Health Services: Is It Time to Change the Paradigm? *Australian Health Review* 38 (5): 533-40. DOI: 10.1071/AH13226. <https://pubmed.ncbi.nlm.nih.gov/25164470/>
31. **Kuek A** and Hakkennes S (2020) Healthcare Staff Digital Literacy Levels and Their Attitudes Towards Information Systems. *Health Informatics Journal*. <https://pubmed.ncbi.nlm.nih.gov/30983476/>

32. Lawrence DS, Muthoga C, Meya DB, and et al (co-author **Niessen L**) (2022) AMBITION Study Group. Cost-effectiveness of single, high-dose, liposomal amphotericin regimen for HIV-associated cryptococcal meningitis in five countries in sub-Saharan Africa: an economic analysis of the AMBITION-cm trial. *Lancet Glob Health.*;10(12):e1845-e1854. doi:10.1016/S2214-109X(22)00450-8. <https://pubmed.ncbi.nlm.nih.gov/36400090/>
33. **Lewis M** (2019) We Need to Measure and Address Corruption and Poor Governance in Health Systems Comment on We Need to Talk About Corruption in Health Systems. *Int J Health Policy Manag.* Oct 1;8(10):616-619. doi: 10.15171/ijhpm.2019.44. <https://www.ncbi.nlm.nih.gov/pmc/articles/PMC6819622/>
34. **Lewis M** and Medici A (2019) Health Policy and Finance Challenges in Latin America and the Caribbean: An Economic Perspective. *Oxford Research Encyclopedia of Economics and Finance.* <https://oxfordre.com/economics/display/10.1093/acrefore/9780190625979.001.0001/acrefore-9780190625979-e-246>
35. McCaffrey N, Higgins J, Greenhalgh E, White SL, Graves N, **Myles PS**, Cunningham JE, Dean E, Doncovio S, Briggs L, Lal A (2022) A systematic review of economic evaluations of preoperative smoking cessation for preventing surgical complications. *International Journal of Surgery*, 104, [106742]. <https://doi.org/10.1016/j.ijso.2022.106742>
36. Ng E, **Topliss DJ**, Paraskeva M, Paul E, Sztal-Mazer S (2021) The Utility of Prophylactic Zoledronic Acid in Patients Undergoing Lung Transplantation. *J Clin Densitom.* Oct-Dec;24(4):581-590. doi: 10.1016/j.jocd.2020.10.003. Epub 2020 Oct 21. <https://pubmed.ncbi.nlm.nih.gov/33189560/>
37. Ong WL, Thangasamy I, Murphy D, Pritchard E, Evans S, **Millar J**, Chalasani V, Rashid P, Winter M, Vela I, Pryor D, Mark S, Lawrentschuk N (2022) Large variation in conservative management of low-risk prostate cancer in Australia and New Zealand. *BJU Int.* Jun;130 Suppl 1(Suppl 1):17-19. doi: 10.1111/bju.15698. Epub 2022 Feb 21. <https://pubmed.ncbi.nlm.nih.gov/35076135/>
38. Panjari M, Robinson PJ, Davis SR, **Schwarz M**, Bell RJ (2014) A comparison of the characteristics, treatment, and outcome after 5 years, of Australian women aged 70+ with those aged <70 years at the time of diagnosis of breast cancer. *J Geriatr Oncol.* Apr;5(2):141-7. doi: 10.1016/j.jgo.2013.12.003. Epub 2014 Jan 5. <https://pubmed.ncbi.nlm.nih.gov/24495702/>
39. Pirie K., Doane M. A., Riedel B., and **Myles P. S.** (2022). Analgesia for major laparoscopic abdominal surgery: a randomised feasibility trial using intrathecal morphine. *Anaesthesia*, 77(4), 428–437. <https://doi.org/10.1111/anae.15651>
40. **Richardson L**, Lehnbohm E, Baysari MT, Walter S, Day RO, Westbrook JI (2016) A time and motion study of junior doctors' work patterns on the weekend: a potential contributor to the weekend effect? *Intern Med J.* doi:10.1111/imj.13120 <https://pubmed.ncbi.nlm.nih.gov/27094756/>
41. **Robinson P** (2021) Petrichor revisited. *Aust N Z J Public Health.* Feb;45(1):3. doi: 10.1111/1753-6405.13091. <https://pubmed.ncbi.nlm.nih.gov/33559963/>
42. Rowland A, van Dyk M, **Warncken D**, Mangoni A, Sorich M, Rowland A (2017) Evaluation of modafinil as a perpetrator of metabolic drug-drug interactions using a model informed cocktail reaction phenotyping trial protocol. *British Journal of Clinical Pharmacology*, doi: 1111/bcp.13478. <https://pubmed.ncbi.nlm.nih.gov/29178272/>
43. Talic S, Shah S, Wild H, Gasevic D, Maharaj A, Ademi Z, Li X, Xu W, Mesa-Eguiagaray I, Rostron J, Theodoratou E, Zhang X, Motee A, **Liew D**, Ilic D (2021) Effectiveness of public health measures in reducing the incidence of covid-19, SARS-CoV-2 transmission, and covid-19 mortality: systematic review and meta-analysis. *BMJ.* Nov 17;375:e068302. doi: 10.1136/bmj-2021-068302. Erratum in: *BMJ.* 2021 Dec 3;375:n2997. <https://www.ncbi.nlm.nih.gov/pmc/articles/PMC9423125>

44. **Wilson J**, You X, Ellis M et al. (2021) VO2max as an exercise tolerance endpoint in people with cystic fibrosis: Lessons from a lumacaftor-ivacaftor trial, *Journal of Cystic Fibrosis* 20(3):499-505. doi: 10.1016/j.jcf.2020.12.006
<https://pubmed.ncbi.nlm.nih.gov/33358691/>
45. Yadav J, Menon GR, Mitra M, Allarakha S, **John D**. (2022) Burden and cost of communicable, maternal, perinatal and nutrition deficiency diseases in India. *J Public Health (Oxf)*. Jun 27;44(2):217-227.doi: 10.1093/pubmed/fdaa173. <https://pubmed.ncbi.nlm.nih.gov/32970145/>
46. Yuan F, Ni H, **Asche CV**, Kim M, Walayat S, Ren J (2017) Efficacy of Bifidobacterium infantis 35624 in patients with irritable bowel syndrome: a meta-analysis. *Curr Med Res Opin*. Jul;33(7):1191-1197. doi: 10.1080/03007995.2017.1292230. Epub 2017 Mar 7 <https://pubmed.ncbi.nlm.nih.gov/28166427/>
47. Zheng J, Sampurno F, George DJ, Morgans AK, Nguyen H, Abrahm JL, Bjartell A, Davis ID, Fitch MI, Gillessen S, Kanesvaran R, Matthew A, **Millar JL**, O'Sullivan JM, Payne H, Pouliot F, Yates P, Evans SM.(2022) Establishing metastatic prostate cancer quality indicators using a modified Delphi approach. *Clin Genitourin Cancer*. Apr;20(2):e151-e157. doi: 10.1016/j.clgc.2021.11.018. Epub 2022 Jan 7 <https://pubmed.ncbi.nlm.nih.gov/35135748/>



SECTION 3

OUR FINANCES

SIMPLIFIED OPERATING STATEMENT**2020-2021****Revenue**

Donations	\$1195.73
------------------	------------------

Expenses

Insurance for GENI by AON:	\$783.66
-----------------------------------	-----------------

Voluntary Workers Personal Accident and
Association Liability (Professional and Management Liability etc)

GENI website (Just Host)

Plus Hosting, Site Lock Security	\$286.87
----------------------------------	-----------------

GENI Domain Name Registration	\$25.20
-------------------------------	----------------

Performance Award Program

GENI Award for Outstanding Contribution 2020	\$100.00
--	-----------------

Total expenditure	\$1,195.73
--------------------------	-------------------

Total revenue (donations)	\$1,195.73
----------------------------------	-------------------

SIMPLIFIED OPERATING STATEMENT**2021-2022****Revenue**

Donations	\$1,202.27
------------------	-------------------

Expenses

Insurance for GENI by AON:	\$783.86
-----------------------------------	-----------------

Voluntary Workers Personal Accident and

Association Liability (Professional and Management Liability etc)

GENI website (Just Host)

Plus Hosting, Site Lock Security	\$293.92
----------------------------------	-----------------

GENI Domain Name Registration	\$24.49
-------------------------------	----------------

Performance Award Program

GENI Award for Outstanding Contribution 2021	\$100.00
--	-----------------

Total expenditure	\$1,202.27
--------------------------	-------------------

Total revenue (donations)	\$1,202.27
----------------------------------	-------------------

ACKNOWLEDGMENTS & THANK YOU

Donor

Dr Kathryn Antioch, Chief Executive Officer GENI

Important Key organisations

Cochrane Collaboration

GIN (Guidelines International Network)

IHEA (International Health Economics Association)

National Guideline Clearinghouse_AHRQ – Agency for Healthcare Research and Quality, US Department of Health, and Human Services

New Zealand Guidelines Group

NICE (National Institute for Clinical Excellence)

NHMRC (National Health and Medical Research Council – Australian Government)

NHMRC Clinical Practice Guidelines Portal

NHS Centre for Reviews and Dissemination (including the Economic and Evaluation Database – NHS EED)

NHS Evidence

WHO Health Evidence Network



CONTACT US

<http://geni-econ.org/contact-us>

